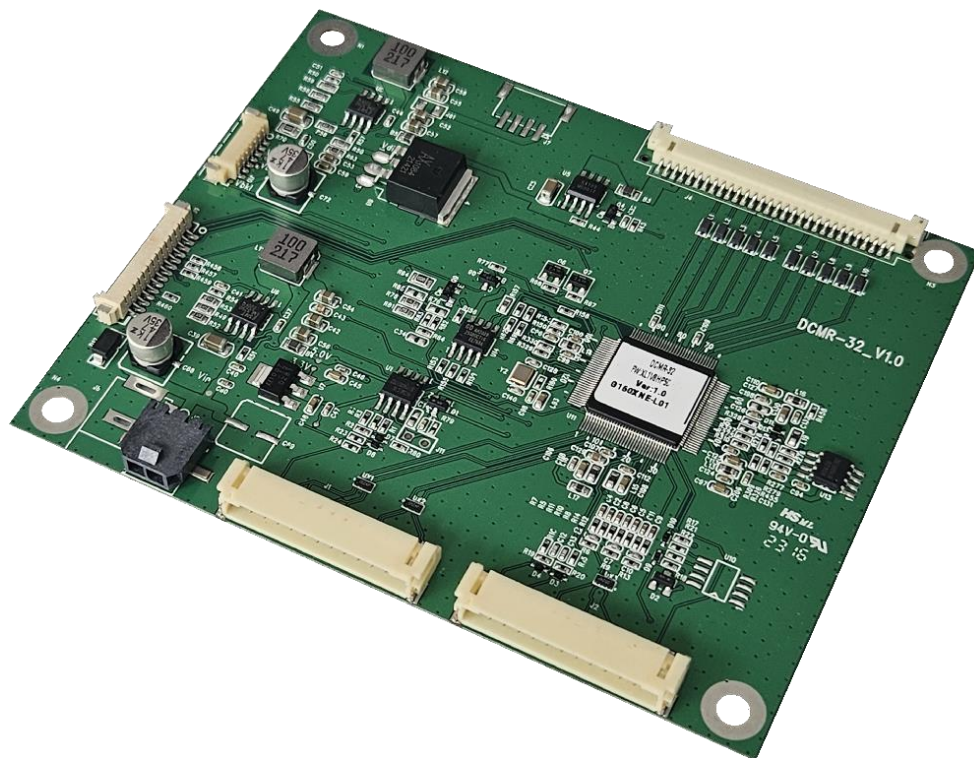


DCMR-32

(DVI and analog RGB TFT-LCD Controller)

Product Specification



Product Specification Status

- Preliminary
- Final

This specification is subject to legal disclaimers.

1. Product Overview

DCMR-32 is a DVI and analog RGB to LVDS converter board which accepts common video signals. Digital interface DVI 1.0 is supported as well as analog RGB. It generates all necessary control signals and panel data to drive TFT-LCDs with VDD level 3.3V, 5V or 12V. This TFT-controller board supports resolutions up to 1920x1200 (WUXGA) at a vertical refresh rate up to 60Hz. The user interface includes brightness, contrast adjustment, etc. by on-screen programming.

2. Features

General

- Support up to 1920x1200 (WUXGA) resolution @ 60Hz
- DDC/CI support by embedded DDC I²C-bus interface
- I²C-slave interface for display control
- Panel usage timer

Power Management

- Input voltage 12V
- TFT panel power supply of 3.3V, 5V or 12V
- Backlight power supply 5V or 12V

HDMI 1.4a Compliant Digital Input Interface

- Single link on-chip TMDS receiver up to 225MHz
- Supports DVI 1.0

Analog RGB Input Interface

- Supports Sync-On-Green (SOG) and various kinds of composite sync modes

Auto Detection / Calibration

- Input format detection
- Compatibility with standard VESA Mode
- Smart engine for phase / image position / color calibration

Scaling

- Fully programmable zoom ratios
- Independent horizontal/vertical scaling
- Advanced zoom algorithm provides high image quality
- Sharpness/Smooth filter enhancement
- Support non-linear scaling from 4:3 to 16:9 or 16:9 to 4:3

Color Processor

- True 10-bit color processing engine
- sRGB compliance

Output Interface

- Dual-LVDS 24-bit output interface
- Spread-Spectrum DPLL to reduce EMI
- Support VESA and JEIDA mapping

On Screen Display menu

- Backlight dimming
- Color adjustments
- Several other settings

Environmental

- ✓RoHS
- ✓REACH

3. Functional Diagram

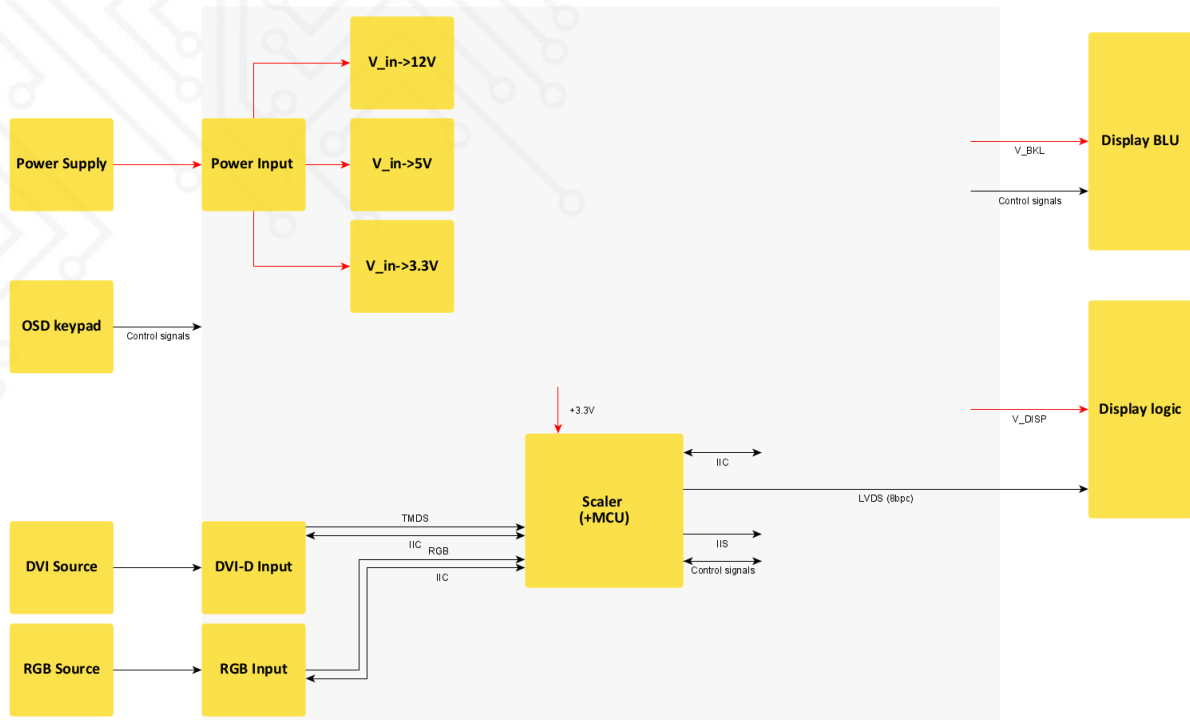


Fig 1. System Diagram

4. Typical Application

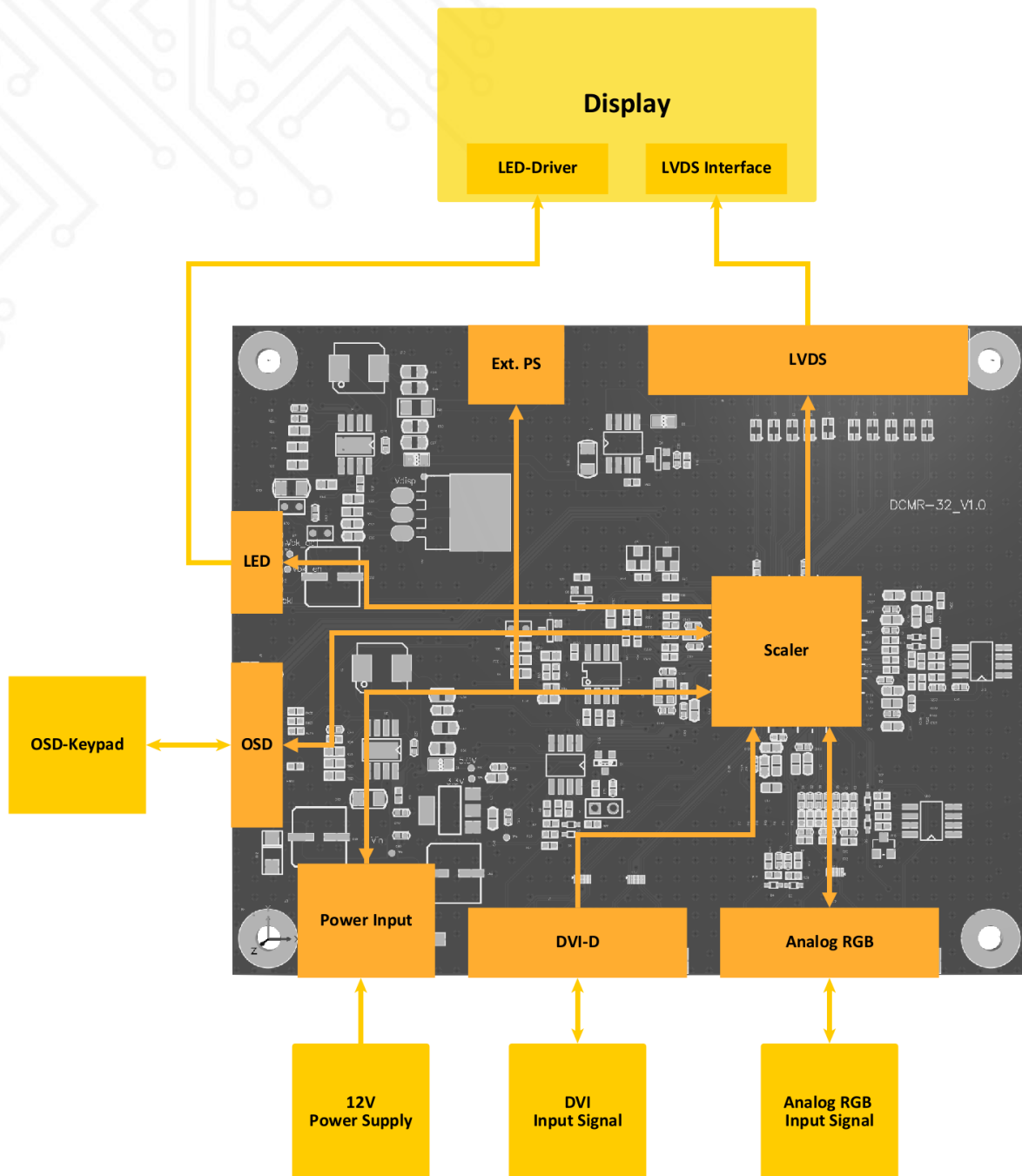


Fig 2. Application of DCMR-32

5. Electrical Characteristics

All ratings @ $V_{DD} = 12.0V$, $\theta = 25^{\circ}C$, Var. STD, and voltages referenced to GND, unless otherwise noted.

a. Input

Table 1. Electrical Input Characteristics

Symbol	Parameter	Test conditions	Min	Typ	Max	Unit
V_{DD}	Operating Supply Voltage	-	10.8	12.0	13.2	V DC
V_{DDmax}	Absolute Max. Rating ¹	-	-0.3	-	16.0	V DC
I_{DD}	Current Consumption ²	Board Only (active mode)	113	119	149	mA
		Board Only (sleep mode)	-	21	-	mA
		With WVGA Display ³	0.20	0.31	0.42	A
		With XGA Display ⁴	0.32	0.60	0.92	A
		With FHD Display ⁵	0.43	1.18	1.77	A
P_{DD}	Power Consumption	Active mode	1.36	1.43	1.79	W

b. Output

DC Characteristics

Table 2. Electrical Output Characteristics

Symbol	Parameter	Test conditions	Min	Typ	Max	Unit
V_{Panel}	Display Supply Voltage	3.3V configuration	3.0	3.3	3.6	V DC
		5V configuration	4.5	5	5.5	V DC
		12V configuration	-	V_{DD}	-	V DC
I_{Panel}	Display Supply Current	-	-	-	2.0	A
V_{BKL}	Backlight Supply Voltage	5V configuration	4.5	5	5.5	V DC
		12V configuration	-	V_{DD}	-	V DC
I_{BKL}	Backlight Supply Current	V_{DD} configuration	-	-	2.0	A
V_{BKL_EN}	Backlight Enable Voltage	3.3V configuration	3.0	3.3	3.6	V DC
		5V configuration	4.5	5	5.5	V DC

¹ Consider ratings of connected parts

² Current consumption depends on the board's variant & firmware

³ Test was performed with InnoLux G070Y2-L01 Rev. C6 (WVGA, 500cd/m²). Backlight PWM duty ratio min: 10%

⁴ Test was performed with InnoLux G150XNE-L01 (XGA, 500cd/m²). Backlight PWM duty ratio min: 10%

⁵ Test was performed with AUO G215HVN01.0 (FHD, 300cd/m²). Backlight PWM duty ratio min: 10%

V _{BKL_ADJ}	Backlight Adjust Voltage	3.3V configuration	3.0	3.3	3.6	V DC
		5V configuration	4.5	5	5.5	V DC
f _{BKL_ADJ} ⁶	Backlight Adjust Frequency	PWM configuration	160	200	20k	Hz
D _{BKL_ADJ}	Backlight Adjust Duty Cycle	PWM configuration	0	-	100	%

Panel Power Sequencing

DCMR-32 follows a special sequence to power up display- and backlight-VCC. This timing is set in the F/W.

6. OSD (On-Screen Display)

The user-friendly, intuitive controllable integrated OSD menu provides certain functions to change settings, adjust the image and others. It can be controlled by an OSD-keyboard. The status of the LCD controller can be checked by a LED which is integrated on the keyboard.

a. OSD-Keyboard

A 5-button OSD-keyboard with one LED on it to show the board's status is connectable.

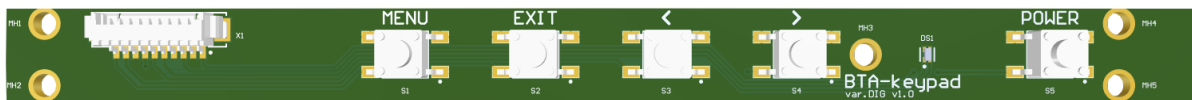


Fig 3. OSD-keyboard

Buttons

The function of each OSD key is shown in the following table.

Table 3. OSD keyboard functions

No.	Button	Switch Function	Hot-Key Function
1	Menu	1. Open OSD sub menu 2. Save changes and exit	Open OSD main menu
2	Exit	Discard changes and exit	-
3	Left	1. Move left in menu list 2. Decrease the value of selected item	Show signal info
4	Right	1. Move right in menu list 2. Increase the value of selected item	Input select
5	Power	Turn power on / off	-

⁶ Analog inverse output by hardware configuration.

LED

LED colors and their meanings are described in the table below.

Table 4. OSD-keyboard LED status lights

LED Color	Status	Represents
Green	Constant	Normal state
Amber	Constant	Searching signal
Red	Constant	Power saving

b. OSD-menu

Menu Structure

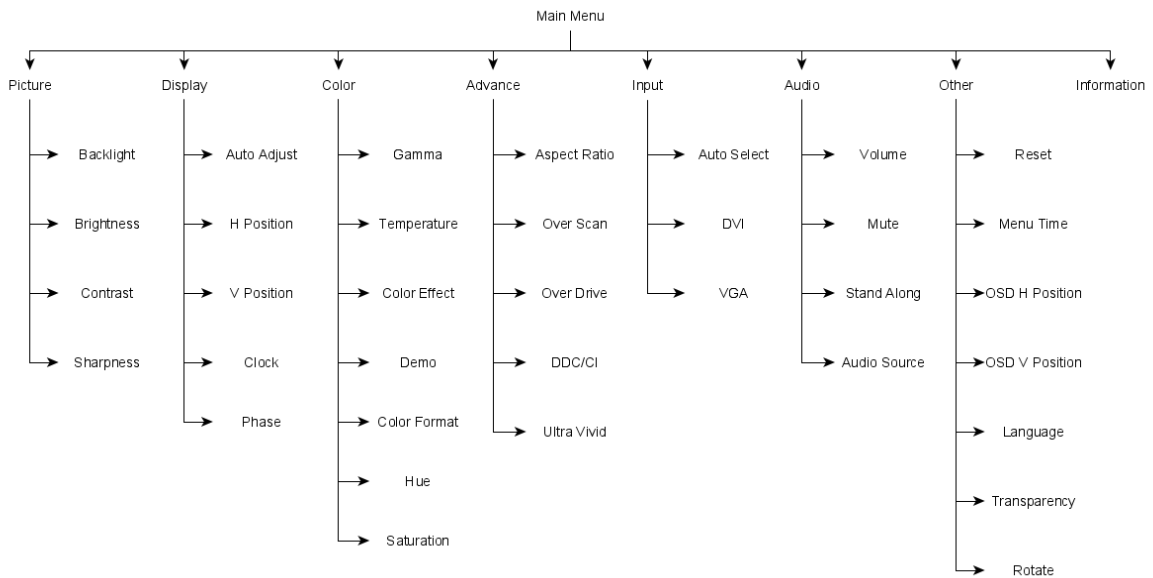


Fig 4. OSD-menu structure

Menu Items

Table 5. OSD: Menu Items

Title	Function
Picture	Adjust image settings
Display	Adjust image position
Color	Adjust color settings
Advance	Advanced settings
Input	Input source selection
Audio	Audio settings
Other	Adjust the On-Screen-Display settings
Information	Information about current timing

Main-Menu: Picture

Table 6. OSD: Main-Menu Picture

Title	Function
Backlight	Adjust the backlight-intensity
Brightness	Adjust the brightness of the image
Contrast	Adjust the contrast of the image
Sharpness	Adjust the sharpness of the image

Main-Menu: Display⁷

Table 7. OSD: Main-Menu Display

Title	Function
Auto Adjust	Input format detection, phase/image position adjustment
H Position	Adjust horizontal position of the image
V Position	Adjust vertical position of the image
Clock	Adjust clock
Phase	Adjust phase

Main-Menu: Color

Table 8. OSD: Main-Menu Color

Title	Function
Gamma	Adjust gamma level of the image
Temperature	Adjust the color temperature
Color Effect	Select a color effect
Demo	Select a mode to check hue and saturation settings
Color Format	Select the color model
Hue	Adjust the color balance
Saturation	Adjust the color intensity

Sub-Menu: Temperature - User

Table 9. OSD: Sub-Menu: Temperature - User

Title	Function
R	Adjust red video gain
G	Adjust green video gain
B	Adjust blue video gain

⁷ Available for analog RGB

Sub-Menu: Color Effect - User

Table 10. OSD: Sub-Menu: Color Effect - User

Title	Function
Hue	Adjust hue of respective 6-axis color
Saturation	Adjust saturation of respective 6-axis color

Main-Menu: Advance

Table 11. OSD: Main-Menu Advance

Title	Function
Aspect Ratio	Select aspect ratio or scaling factor of the image
Over Scan	Enable / Disable overscan function
Over Drive	Enable / Disable overdrive function
DDC/CI	Enable / Disable DDC/CI function
Ultra Vivid	Select grades of Ultra Vivid color mode

Main-Menu: Input

Table 12. OSD: Main-Menu Input

Title	Function
Auto Select	Select first available input signal
DVI	DVI fixed
RGB	RGB fixed

Main-Menu: Audio⁸

Table 13. OSD: Main-Menu Audio

Title	Function
Volume	Adjust audio volume
Mute	Mute audio output

Stand Alone	Enable / Disable standby audio
Audio Source	Select audio source

Main-Menu: Other

Table 14. OSD: Main-Menu Other

Title	Function
Reset	Reset all OSD settings
Menu Time	Set the OSD duration [s]
OSD Position	H Set the horizontal position of OSD menu
OSD Position	V Set the vertical position of OSD menu
Language	Select OSD menu language
Transparency	Adjust the transparency of the OSD menu
Rotate	Rotate OSD by 0°, 90° or 270°

Main-Menu: Information

Table 15. OSD: Main-Menu Information

Title	Function
Signal source	Show current signal source
Current resolution	Show resolution of input signal
H- & V-frequency	Show horizontal and vertical frequency
Pixel clock frequency	Show pixel clock frequency
Board model	Board model
Firmware name	Firmware name
Firmware version	Firmware version

⁸ Only for analog audio output.

7. Interfaces

a. LVDS Interface

At the LVDS-Interface, single- and dual-channel LVDS is supported in either 6- or 8-bit configuration. As the board is delivered pre-configured, no changes have to be made to the settings. Pixel clocks up to 93MHz in single-channel LVDS and 186MHz in dual-channel LVDS configuration, and therefore resolutions up to WUXGA (1920x1200) @ 60Hz are supported.

Settings

In order to achieve reliable communication when using longer cables, pre-emphasis may be applied to the LVDS signal lines. On the other hand, the spread spectrum function can enhance the behavior in an EMI sensitive environment.

Mapping

6-bit and 8-bit per color (18-bit or 24-bit color depth) VESA- and JEIDA-mappings are supported at the LVDS-interface. The bit numbering of pixels is big endian, where the most significant bit has the largest bit number.

Table 16. LVDS Bit Number Mappings

VESA		JEIDA	
6-bit	8-bit	6-bit	8-bit
5	7	5	5
4	6	4	4
3	5	3	3
2	4	2	2
1	3	1	1
0	2	0	0
	1		7
	0		6

The following tables are identical for odd and even lines.

Table 17. VESA Data Packing

LVDS Data Line	Bit position						
	6	5	4	3	2	1	0
D 0	G0	R5	R4	R3	R2	R1	R0
D 1	B1	B0	G5	G4	G3	G2	G1
D 2	DE	VS	HS	B5	B4	B3	B2
D 3 (for 8-bit)	-	B7	B6	G7	G6	R7	R6

Table 18. JEIDA Data Packing

LVDS Data Line	Bit position						
	6	5	4	3	2	1	0
D 0	G2	R7	R6	R5	R4	R3	R2
D 1	B3	B2	G7	G6	G5	G4	G3
D 2	DE	VS	HS	B7	B6	B5	B4
D 3 (for 8-bit)	-	B1	B0	G1	G0	R1	R0

b. I²C Interface

DCMR-32 can control various slave devices via a general purpose I²C-bus interface. Also DCMR-32 can act as slave device and receive display configuration settings. For further information about I²C usage, please contact your local sales partner.

Electrical Characteristics

DC Characteristics

Table 19. I²C Interface DC Characteristics

Symbol	Characteristic	Test conditions	Min	Typ	Max	Unit
V _{CC}	I ² C-bus operating voltage (internal pull-up)	3.3V configuration	3.0	3.3	3.6	V
V _{IH}	High-level input voltage	-	0.7 V _{CC}	-	-	V
V _{IL}	Low-Level input voltage	-	-	-	0.3V _{CC}	V

AC Characteristics

Table 20. I²C Interface AC Characteristics

Symbol	Characteristic	Min	Typ	Max	Unit
f _{CLK}	Clock Frequency	-	100	400	kHz
t _{HIGH}	Clock high time	600	-	-	ns
t _{LOW}	Clock low time	1300	-	-	ns

Operations

In general, the I²C-bus operations must follow the I²C-bus standard.

Write

A write operation looks the following way:

Start	Device Address	Write	Ack	Word Address	Ack	Data	Ack	Stop
-------	----------------	-------	-----	--------------	-----	------	-----	------

Read

A random read operation looks the following way:

Start	Device Address	Write	Ack	Word Address(n)	Ack	Start	Device Address	Read	Ack	Data(n)	No Ack	Stop
-------	----------------	-------	-----	-----------------	-----	-------	----------------	------	-----	---------	--------	------

c. DDC

This LCD controller provides a serial communications link between the video adapter and the controller, the DDC (Display Data Channel). Properties such as maximum resolution, color depth and supported video timing modes can be transmitted using DDC.

EDID

The DCMR-32 controller board supports the Extended Display Identification Data (EDID 1.4) standard.

EDID contains basic information about a monitor and its capabilities, including vendor information, maximum image size, color characteristics, factory pre-set timings, frequency range limits, a character's string for the monitor name and serial number. The video adapter uses this information for configuration purposes, so that the monitor and system can work together.

DDC/CI

The display controller complies with the MCCS 2.2a standard. It supports a standard set of MCCS VCP codes to adjust the displayed image or control the display. Read and write commands are available for the following categories:

- Image Adjustments
- Color Adjustments
- Image Geometry Adjustments
- Audio Adjustments
- Window Operations
- DPVL Support

8. Mechanical Characteristics

Table 21. Mechanical Characteristics

Parameter	Value
Dimensions (H x V)	110.0mm x 90.0mm
Total height ⁹	8.0mm (Top: 6.1mm, PCB: 1.6mm, Bot: 0.3mm)
Contour	Rectangular
Production technology	SMT
Mounting holes	3.5mm (Use M3 screws)
Weight	50g

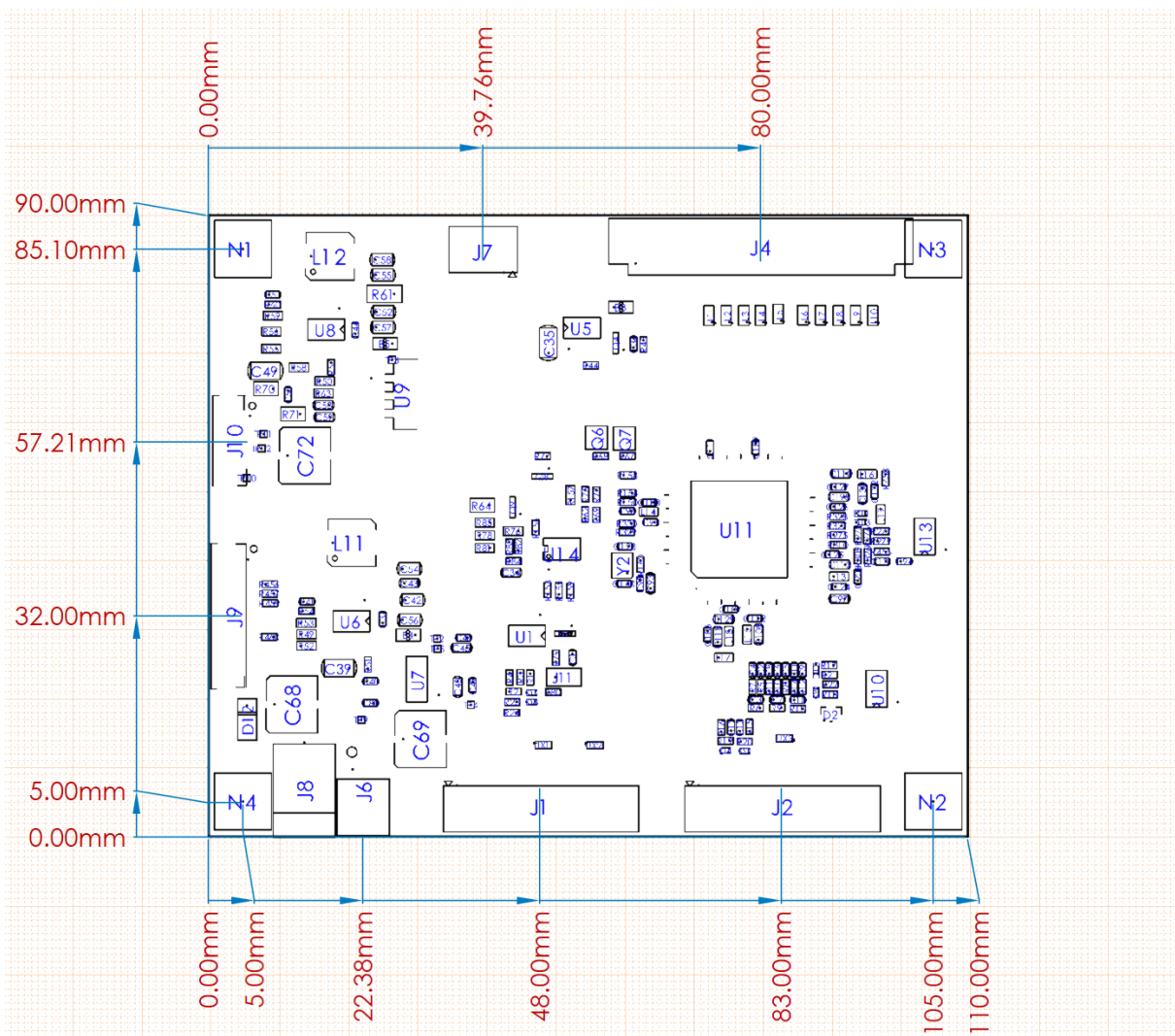


Fig 5. Outline

⁹ Assembled with power connector J6

9. Connectors

Abbreviations used within this chapter are listed in the table below.

Table 22. Signal Assignment Abbreviations

Abbreviation	Description
GND	Ground
PWR	Power
I	Input
O	Output
I/O	Bi-directional
n.c.	Not connected (do not connect)

a. Connector Overview

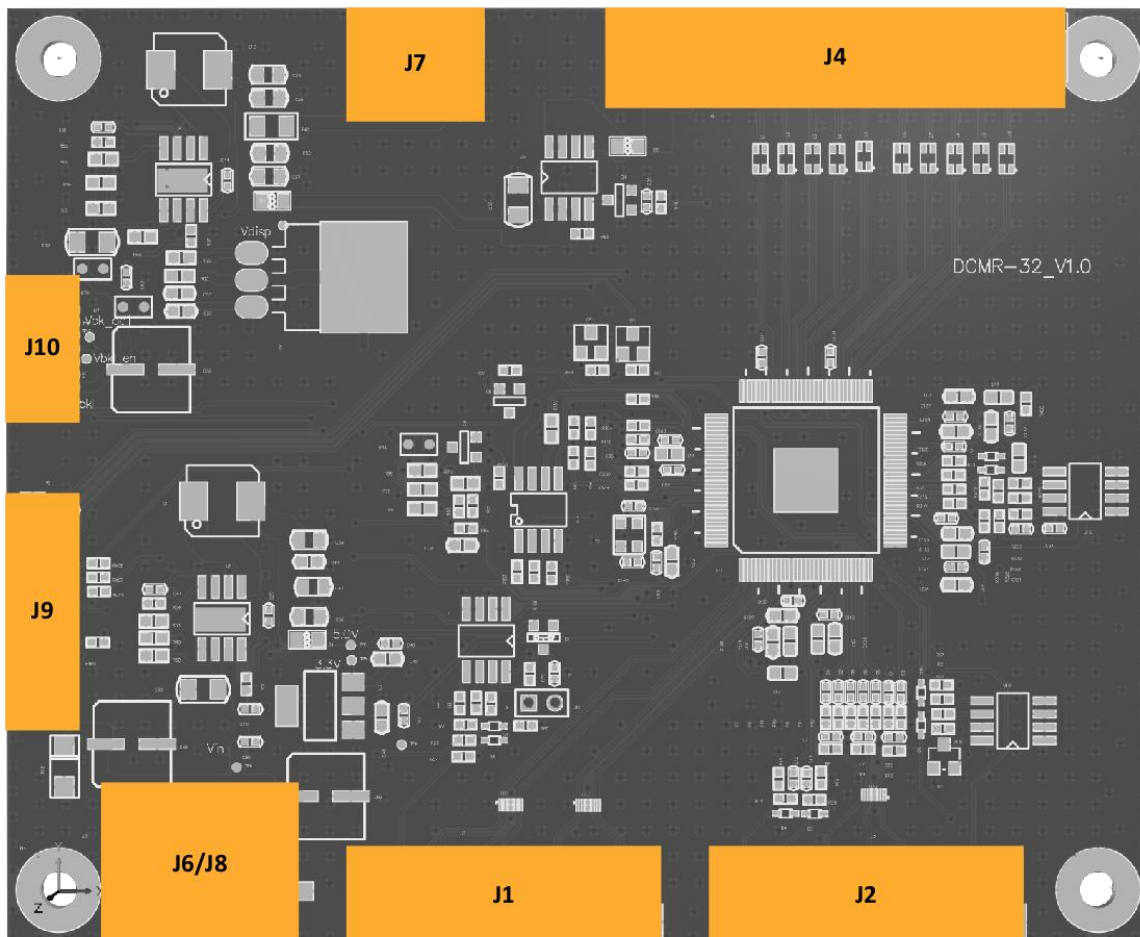


Fig 6. Connector Overview

b. Input Connectors


Power Connectors

The board offers different connector configurations to be supplied with power. In standard configuration Power Connector (J6) is assembled. The other types and combinations are available on request.

Power Connector (J8)

The Power Connector (J8) supplies the board with power. The connection is mandatory.

Table 23. Power Connector (J8)

	Parameter	Value
	Manufacturer: Connector model no.	Taclex: TDJ-A196GAJ
	Pin amount	2 pins
	Mating housing part	DC Jack 2.5mm x 5.5mm

Note: 2.0A max


Table 24. Power Connector (J8) Pin Assignment

Pin	Signal	Description	Type
Inner	VIN	Power input	PWR
Outer	GND	Ground	GND

Power Connector (J6)

The Power Connector (J6) supplies the board with power. The connection is mandatory.

Table 25. Power Connector (J6)

	Parameter	Value
	Manufacturer: Connector model no.	Molex: 43650-0212
	Pin amount	2 pins (use Pin 1 as marked on connector)
	Mating housing part	Molex: 43645-0200

Note: 8.5A max

Table 26. Power Connector (J6) Pin Assignment

Pin	Signal	Description	Type
1	GND	Ground	GND
2	VIN	Power input	PWR

Video Input

The board has different connectors to connect a source, which provides the video signal. In standard configuration all video connectors are assembled.

DVI connector (J1)

The DVI connector (J1) can be used to provide a digital video signal to the board. The connection is mandatory.

Table 27. DVI connector (J1)


	Parameter	Value
	Manufacturer: Connector model no.	Yeonho: 20022WR-13
	Pin amount	13 (use Pin 1 as marked on connector)
	Mating housing part	Yeonho: 20022HS-13

Table 28. DVI connector (J1) Pin Assignment

Pin	Signal	Description	Type
1	SDA	DDC data	I/O
2	SCL	DDC clock	I/O
3	D2+	T.M.D.S. Data2+	I
4	D2-	T.M.D.S. Data2-	I
5	GND	T.M.D.S. Data2 shield	GND
6	D1+	T.M.D.S. Data1+	I
7	D1-	T.M.D.S. Data1-	I
8	GND	T.M.D.S. Data1 shield	GND
9	D0+	T.M.D.S. Data0+	I
10	D0-	T.M.D.S. Data0-	I
11	GND	T.M.D.S. Data0 shield	GND
12	RXC+	T.M.D.S. Clock+	I
13	RXC-	T.M.D.S. Clock-	I

RGB connector (J2)

The RGB connector (J2) can be used to provide an analog RGB signal to the board. The connection is mandatory.

Table 29. RGB connector (J2)


	Parameter	Value
	Manufacturer: Connector model no.	Yeonho: 20022WR-13
	Pin amount	13 (use Pin 1 as marked on connector)
	Mating housing part	Yeonho: 20022HS-13

Table 30. RGB connector (J2) Pin Assignment

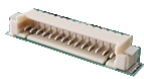
Pin	Signal	Description	Type
1	AHS	Horizontal sync	I
2	GND	Ground	GND
3	AVS	Vertical sync	I
4	GND	Ground	GND

5	B+	Blue signal	I
6	B-	Blue ground	I
7	G+	Green signal	I
8	G-	Green ground	I
9	R+	Red signal	I
10	R-	Red ground	I
11	SCL	DDC clock	I/O
12	SDA	DDC data	I/O
13	n.c.	-	n.c.

OSD Interface Connector (J9)

The OSD Interface Connector (J9) can be used for different purposes. An OSD-keyboard can be connected by this interface. The connection is optional.

Table 31. OSD Interface Connector (J9)

	Parameter	Value
	Manufacturer: Connector model no.	Molex: 53261-1471
	Pin amount	14 pins (use Pin 1 as marked on connector)
	Mating housing part	Molex: 51021-1400

Note: Max 1A per contact

Table 32. OSD Interface Connector (J9) Pin Assignment


Pin	Signal	Description	Type
1	LED_GN	LED Green	O
2	LED_RD	LED Red	O
3	GND OSD/ISP	Ground	GND
4	Power Key	OSD Key Power	I
5	n.c.	-	n.c.
6	Menu Key	OSD Key Menu	I
7	Down Key	OSD Key Down	I
8	ISP DATA	ISP-I ² C SDA	I/O
9	ISP CLK	ISP-I ² C SCL	I/O
10	Up Key	OSD Key Up	I
11	Sel Key	OSD Key Select	I
12	n.c.	-	n.c.
13	n.c.	-	n.c.
14	n.c.	-	n.c.

c. Output Connectors

LVDS Interface (J4)

The LVDS Interface (J4) is the video output interface. The connection is mandatory.

Table 33. LVDS Interface (J4)

	Parameter	Value
	Manufacturer: Connector model no.	HRS: DF14-30P1.25H
	Pin amount	30 pins (use Pin 1 as marked on connector)
	Mating housing part	HRS: DF14-30S-1.25C

Note: Max 1A per contact


Table 34. LVDS Interface (J4) Pin Assignment

Pin	Signal	Description	Type
1	V_Panel	Panel Power	0
2	V_Panel	Panel Power	0
3	V_Panel	Panel Power	0
4	V_Panel	Panel Power	0
5	n.c.	-	n.c.
6	GND	Ground	GND
7	GND	Ground	GND
8	GND	Ground	GND
9	TX00-	Negative LVDS differential data output – Line 0 (odd)	0
10	TX00+	Positive LVDS differential data output – Line 0 (odd)	0
11	TX01-	Negative LVDS differential data output – Line 1 (odd)	0
12	TX01+	Positive LVDS differential data output – Line 1 (odd)	0
13	TX02-	Negative LVDS differential data output – Line 2 (odd)	0
14	TX02+	Positive LVDS differential data output – Line 2 (odd)	0
15	TXOCLK-	Negative LVDS differential clock output (odd)	0
16	TXOCLK+	Positive LVDS differential clock output (odd)	0
17	TX03-	Negative LVDS differential data output – Line 3 (odd)	0
18	TX03+	Positive LVDS differential data output – Line 3 (odd)	0
19	GND	Ground	GND
20	TXE0-	Negative LVDS differential data output – Line 0 (even)	0
21	TXE0+	Positive LVDS differential data output – Line 0 (even)	0
22	TXE1-	Negative LVDS differential data output – Line 1 (even)	0
23	TXE1+	Positive LVDS differential data output – Line 1 (even)	0
24	TXE2-	Negative LVDS differential data output – Line 2 (even)	0
25	TXE2+	Positive LVDS differential data output – Line 2 (even)	0
26	TXECLK-	Negative LVDS differential data output (even)	0
27	TXECLK+	Positive LVDS differential data output (even)	0
28	TXE3-	Negative LVDS differential data output – Line 3 (even)	0
29	TXE3+	Positive LVDS differential data output – Line 3 (even)	0
30	GND	Ground	GND

Backlight Connector (J10)

The Backlight Connector (J10) is used to power backlight units. The connection is mandatory.

Table 35. Backlight Connector (J10)

	Parameter	Value
	Manufacturer: Connector model no.	Molex: 53261-0771
	Pin amount	7 pins (use Pin 1 as marked on connector)
	Mating housing part	Molex: 51021-0700

Note: Max 1A per contact


Table 36. Backlight Connector (J10) Pin Assignment

Pin	Signal	Description	Type
1	GND	Ground	GND
2	GND	Ground	GND
3	GND	Ground	GND
4	BKL_ADJ	Backlight Adjust	0
5	BKL_EN	Backlight Enable	0
6	V_BKL	Backlight Power	0
7	V_BKL	Backlight Power	0

External Power Supply (J7)

The External Power Supply (J7) offers different voltage levels for powering additional components. The connection is optional.

Table 37. External Power Supply (J7)

	Parameter	Value
	Manufacturer: Connector model no.	Yeonho: 20022WR-04
	Pin amount	4 (use Pin 1 as marked on PCB)
	Mating housing part	Yeonho: 20022HS-04

Note: Connector image is 13-pin version, but 4-pin version is used.

Table 38. External Power Supply (J7) Pin Assignment

Pin	Signal	Description	Type
1	VEXT_12	12V power output	0
2	GND	Ground	GND
3	GND	Ground	GND
4	VEXT_5	5V power output	0

10. Environmental Ratings

Table 39. Environmental ratings

Symbol	Test item	Min	Max	Unit
ϑ_{ST}	Storage temperature	-10	70	°C
ϑ_{OP}	Operating temperature ¹⁰	0	60	°C

11. Absolute Maximum Ratings

Table 40. Absolute maximum ratings

Symbol	Test item	Min	Max	Unit
ϑ_{ST}	Storage temperature	-20	85	°C
ϑ_{OP}	Operating temperature	-5	65	°C

12. Application Information

a. Operating Precautions

- Be sure to ground yourself before handling the controller board.
- Turn off power supply before inserting or disconnecting any connector.
- Spike noise causes maloperation of circuits. It should be lower than following voltage: $\pm 200\text{mV}$ (over and under shoot voltage).
- This module has high frequency circuits. Sufficient suppression to the electromagnetic interference shall be done by system manufacturers. Grounding and shielding methods may be important to minimize the interference.

b. General Cautions

- The responsibility for the applicability of customer specific products and use in a particular customer design is always within the authority of the customer.
- An important factor for each system integration is the thermal design. System designers might need to implement a passive or active cooling system in their specific design to keep the temperatures of all parts within the specification.
- Be careful of condensation at sudden temperature change. Condensation damages electrical contacted parts.
- When preparing a cable for a specific display, always refer to appropriate cable pin-out and display specification. Always check the signals before connecting the cable. Any incorrect pin connection may

¹⁰ Phase- or clock-shift can appear between -10°C and 0°C

damage the display and the controller permanently.

- Take care of all the sensitive electronic components.
- Do not modify the module assembly.
- You must mount a module using its respective mounting holes and avoid any bend force during mounting.
- Be sure to check the board's status LED and do a reset in OSD if any problem occurs during operation.
- Should you need any technical help, please contact Beck GmbH & Co. Elektronik Bauelemente KG.

13. Ordering Information

This board is available in different configurations which can be selected as best suitable for your application. If another assembly configuration or special FW settings (e.g. default values, boot logo, etc.) suits your needs better, please contact Beck GmbH & Co. Elektronik Bauelemente KG for a customized configuration.

14. Packaging / Labels

a. Part

Serial number

Serial number looks in general the following way:

ABCN.NN-YYMMDDXXXX

Table 41. S/N Encoding

Code	Meaning
ABC	Acronym for the SMT producer
N.NN	Firmware version VN.NN
YYMMDD	Manufacturing date (YY/MM/DD)
XXXX	Manufacturing sequence of product

Label

Part label will look similar to the figure below.

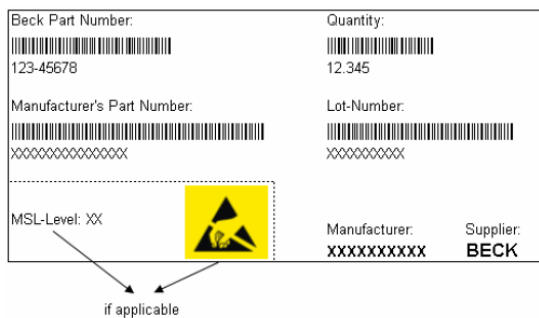


Fig 7. Part label

ESD bag

Each board will be packed in a conductive ESD bag.

b. Packaging

Label

The outer label will be similar to the figure below.

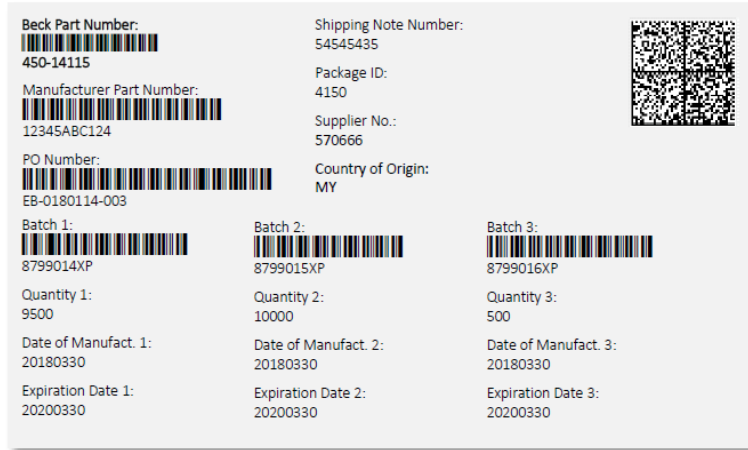


Fig 8. Box label

Box

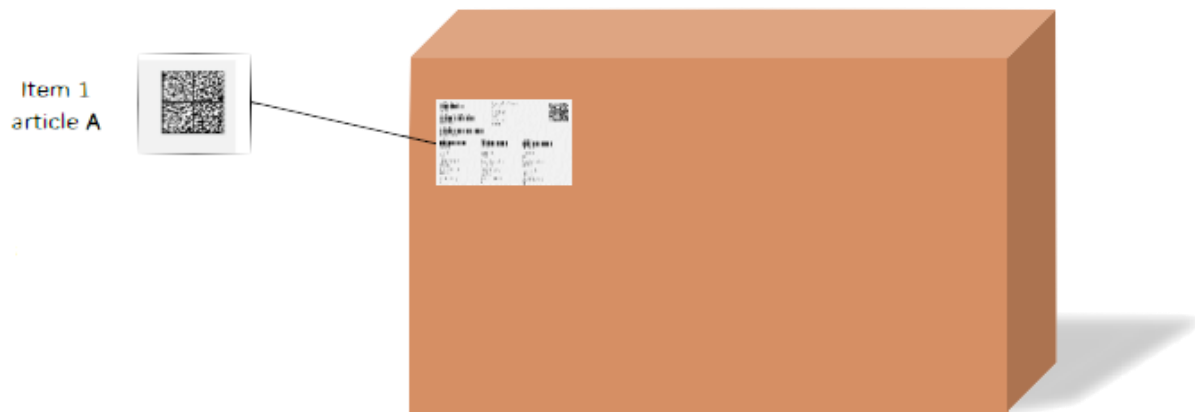


Fig 9. Carton

Table 42. Packaging details

Name	Value
Max capacity	84 pcs per carton
Max. weight	TBD kg per carton
Outline dimension of carton	TBD mm x TBD mm x TBD mm

15. Abbreviations

Table 43. Abbreviations

Abbr.	Description
BLU	Backlight Unit
BPC	Bits Per Color
BPP	Bits Per Pixel
DAC	Digital-to-analog Converter
DDC	Display Data Channel
DDC/CI	Display Data Channel Command Interface
DDWG	Digital Display Working Group
DPLL	Digital Phase-Locked Loop
DPMS	Display Power Management Service
EDID	Extended Display Identification Data
EEPROM	Electrically Erasable Programmable Read-Only Memory
EMI	Electromagnetic Interference
ESD	Electrostatic Discharge
GND	Ground
HDMI	High Definition Multimedia Interface
I²C	Inter Integrated Circuit
ISP	In System Programming
JEIDA	Japan Electronic Industry Development Association
LCD	Liquid Crystal Display
LED	Light Emitting Diode
LVDS	Low Voltage Different Signaling
MCCS	Monitor Command Control Set
OSD	On Screen Display
PCB	Printed Circuit Board
PCLK	Pixel Clock
PWM	Pulse Width Modulation
REACH	Registration, Evaluation, Authorization and Restriction of Chemicals
RGB	Red, Green, Blue

Abbreviations

RoHS	Restriction of Hazardous Substances
SMBus	System Management Bus
SMT	Surface Mounted Technology
SOG	Sync-On-Green
sRGB	Standard-RGB
TMDS	Transition-Minimized Different Signaling
TFT	Thin-Film Transistor
VCP	Virtual Control Panel
VESA	Video Electronics Standards Association

16. Revision History

Table 44. Revision History

Rev.	Date	Section	Specification Status	Description
0	Jun 18 th , 2023	All	Final	Initial release

17. Legal Information

a. Disclaimers

Limited warranty and liability

Information in this document is believed to be accurate and reliable. However, Beck GmbH & Co. Elektronik Bauelemente KG does not give any representations or warranties, expressed or implied, as to the accuracy or completeness of such information.

Unless Beck has explicitly designated an individual product as meeting the requirements of a particular industry standard, Beck is not responsible for any failure to meet such industry standard requirements.

Buyers should obtain the latest relevant information before placing orders and should verify that such information is current and complete.

Right to make changes

Beck GmbH & Co. Elektronik Bauelemente KG reserves the right to make corrections, enhancements, improvements and other changes to its products and services and to discontinue any product or service, including without limitation specifications and product descriptions, at any time and without notice. This document supersedes all information supplied prior to the publication hereof.

Applications

Applications that are described herein are for illustrative purposes only. Beck GmbH & Co. Elektronik Bauelemente KG makes no representation or warranty that such applications will be suitable for the specified use without further testing or modification.

The customer is responsible for the design and operation of his application. It is the customer's responsibility to determine whether this product is suitable for his applications and products.

Limiting values

Stress above one or more limiting values (as defined in section Absolute maximum ratings) may cause permanent damage and irreversibly affect the quality and reliability of the device.

b. Trademarks

All referenced brands, product names, service names and trademarks are the property of their respective owners.

18. Tables

TABLE 1. ELECTRICAL INPUT CHARACTERISTICS	5	TABLE 25. POWER CONNECTOR (J6).....	15
TABLE 2. ELECTRICAL OUTPUT CHARACTERISTICS	5	TABLE 26. POWER CONNECTOR (J6) PIN ASSIGNMENT....	15
TABLE 3. OSD KEYBOARD FUNCTIONS.....	6	TABLE 27. DVI CONNECTOR (J1)	16
TABLE 4. OSD-KEYBOARD LED STATUS LIGHTS.....	7	TABLE 28. DVI CONNECTOR (J1) PIN ASSIGNMENT	16
TABLE 5. OSD: MENU ITEMS.....	8	TABLE 29. RGB CONNECTOR (J2)	16
TABLE 6. OSD: MAIN-MENU PICTURE	8	TABLE 30. RGB CONNECTOR (J2) PIN ASSIGNMENT	16
TABLE 7. OSD: MAIN-MENU DISPLAY	8	TABLE 31. OSD INTERFACE CONNECTOR (J9)	17
TABLE 8. OSD: MAIN-MENU COLOR	8	TABLE 32. OSD INTERFACE CONNECTOR (J9) PIN ASSIGNMENT	17
TABLE 9. OSD: SUB-MENU: TEMPERATURE - USER	8	TABLE 33. LVDS INTERFACE (J4)	18
TABLE 10. OSD: SUB-MENU: COLOR EFFECT - USER	9	TABLE 34. LVDS INTERFACE (J4) PIN ASSIGNMENT	18
TABLE 11. OSD: MAIN-MENU ADVANCE.....	9	TABLE 35. BACKLIGHT CONNECTOR (J10).....	19
TABLE 12. OSD: MAIN-MENU INPUT.....	9	TABLE 36. BACKLIGHT CONNECTOR (J10) PIN ASSIGNMENT	19
TABLE 13. OSD: MAIN-MENU AUDIO	9	TABLE 37. EXTERNAL POWER SUPPLY (J7).....	19
TABLE 14. OSD: MAIN-MENU OTHER.....	9	TABLE 38. EXTERNAL POWER SUPPLY (J7) PIN ASSIGNMENT	19
TABLE 15. OSD: MAIN-MENU INFORMATION.....	9	TABLE 39. ENVIRONMENTAL RATINGS	20
TABLE 16. LVDS BIT NUMBER MAPPINGS.....	10	TABLE 40. ABSOLUTE MAXIMUM RATINGS	20
TABLE 17. VESA DATA PACKING.....	10	TABLE 41. S/N ENCODING.....	22
TABLE 18. JEIDA DATA PACKING	10	TABLE 42. PACKAGING DETAILS	23
TABLE 19. I ² C INTERFACE DC CHARACTERISTICS	11	TABLE 43. ABBREVIATIONS	24
TABLE 20. I ² C INTERFACE AC CHARACTERISTICS	11	TABLE 44. REVISION HISTORY.....	26
TABLE 21. MECHANICAL CHARACTERISTICS.....	13		
TABLE 22. SIGNAL ASSIGNMENT ABBREVIATIONS.....	14		
TABLE 23. POWER CONNECTOR (J8)	15		
TABLE 24. POWER CONNECTOR (J8) PIN ASSIGNMENT	15		

19. Figures

FIG 1. SYSTEM DIAGRAM.....	3	FIG 6. CONNECTOR OVERVIEW	14
FIG 2. APPLICATION OF DCMR-32	4	FIG 7. PART LABEL	22
FIG 3. OSD-KEYBOARD	6	FIG 8. BOX LABEL	23
FIG 4. OSD-MENU STRUCTURE	7	FIG 9. CARTON.....	23
FIG 5. OUTLINE.....	13		

20. Contents

DCMR-32	1	10. ENVIRONMENTAL RATINGS	20
(DVI AND ANALOG RGB TFT-LCD CONTROLLER)	1	11. ABSOLUTE MAXIMUM RATINGS	20
1. PRODUCT OVERVIEW	2	12. APPLICATION INFORMATION	20
2. FEATURES	2	A. OPERATING PRECAUTIONS	20
3. FUNCTIONAL DIAGRAM	3	B. GENERAL CAUTIONS	20
4. TYPICAL APPLICATION	4	13. ORDERING INFORMATION	21
5. ELECTRICAL CHARACTERISTICS	5	14. PACKAGING / LABELS	22
A. INPUT.....	5	A. PART.....	22
B. OUTPUT.....	5	B. PACKAGING.....	22
6. OSD (ON-SCREEN DISPLAY)	6	15. ABBREVIATIONS	24
A. OSD-KEYBOARD	6	16. REVISION HISTORY	26
B. OSD-MENU.....	7	17. LEGAL INFORMATION	26
7. INTERFACES	10	A. DISCLAIMERS.....	26
A. LVDS INTERFACE.....	10	B. TRADEMARKS	26
B. I ² C INTERFACE	11	18. TABLES	27
C. DDC.....	12	19. FIGURES	27
8. MECHANICAL CHARACTERISTICS	13	20. CONTENTS	28
9. CONNECTORS	14	21. CONTACT INFORMATION	28
A. CONNECTOR OVERVIEW	14		
B. INPUT CONNECTORS	15		
C. OUTPUT CONNECTORS.....	18		

21. Contact Information

For more information or technical support, please visit: <https://www.beck-elektronik.de>